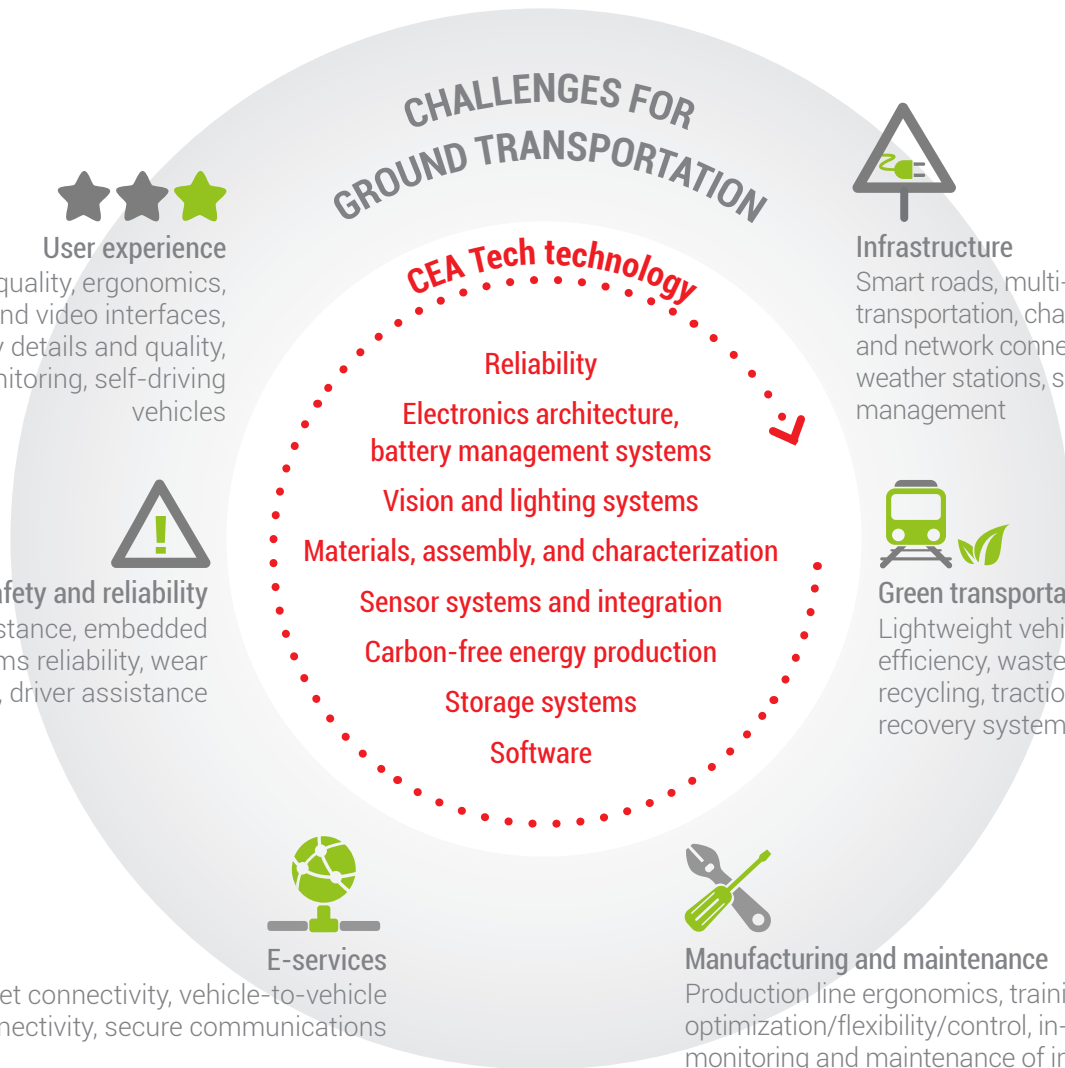




# CEA TECH SERVICES FOR GROUND TRANSPORTATION

Technology for tomorrow's ground-transportation challenges



## CEA Tech can help the following businesses:

- Automotive component manufacturers and subcontractors
- Car manufacturers
- Network manufacturers and operators
- Digital technology companies

Here are some of the ways CEA Tech can support your development:



***Cabling diagnostics***

Embedded diagnostics, cable network maintenance, electrical fault and electric arc detection

***Sensor systems***

Air quality, VOC detection, airbag systems, safety systems, skid prevention, seating comfort

***HMI (virtual and augmented reality, touch screens)***

Dashboard instrumentation, texture feedback, functionalization of glass surfaces (projected GPS, soundproofing), displays

***On-board vision systems***

Night vision for safety, geolocation, detection of pedestrians and obstacles, rear-view cameras, distance measurement

***Materials and assembly***

Lightweight structures, deformable materials, enhanced molds for manufacturing, magnets for motors

***Energy (batteries, fuel cells, organic photovoltaics)***

Electric traction systems, battery management systems, energy recovery, auxiliary consumption reduction, organic photovoltaics, vehicle-network and vehicle-home charging

***Power electronics***

GaN-based component manufacturing and circuit design

***Advanced manufacturing***

Workstation ergonomics, training, automated loading, maintenance

***Software and communication***

Vehicle-to-vehicle and machine-to-machine communication, smart tolls, internet connectivity

***Software and embedded systems design***

Software development tools (software robustness and reliability, error detection); electronic components

***Non-destructive testing***

Material defect detection, characterization of composite materials, predictive maintenance

***Data analysis***

Optimized vehicle range for each route, information and multimedia

***Recycling***

Materials recycling (metals, plastics), lifecycle analysis, waste-to-biomass

... ..